

Connecting
Experiences

Summer destinations

FROM HOTEL
TO APARTMENT

THE DESERT
ROSE

Detail of a house



Triple *volume*

The Spanish architect Guillem Carrera projected the house in Alella, a municipality located between the Mediterranean Sea and the coastal mountain range. The property includes also an old dry stone chapel that rapresents a key point for historical estate.

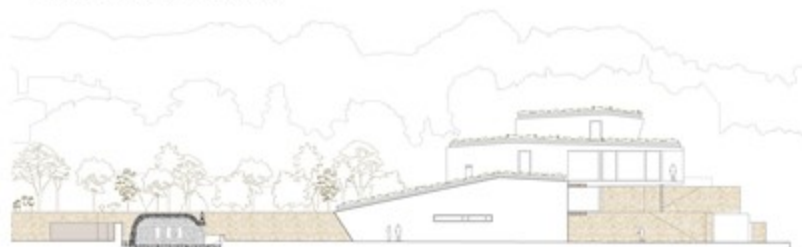






In its initial state, the housing lot presents a composition more typical of the historical landscape than fragmented. Being stabilized horizontally by means of three longitudinal containment walls - north / south direction - of three meters of height each, that structure the terrain on three terraces. It also contains an old dry stone chapel and a series of vegetation and consolidated own trees, with an interest in being conserved. Maintaining the original character of the place becomes the main project premise. To preserve the soul and the morphology, to preserve each one of those things that make it unique and characteristic: the terraces, the retaining walls, the different elements of pre-existing vegetation and the dry stone chapel. These elements are identified to be preserved in the plant and once they have been delimited, a respectful implementation of housing directly on the existing land is established. The resulting ensemble seeks to be a whole, timeless and heterogeneous, that is part of the place and the landscape. The housing program consists of a living

room, dining room, kitchen, rooms, studios, bathrooms, cinema, wellness area, parking for vehicles and spaces for storage, services and facilities; with a constructed surface resulting from 869m², and therefore, a size more typical of the old stately houses existing in the municipality of Alella than of the houses built in the last half century. The architect used a strategy of implementation and hybrid landscape integration including two concepts: the harmonization in terms of using the same stone in the area with which the chapel is made to finish pre-existing retaining walls, plant new Mediterranean vegetation in line with the existing one; and the monumentalization to create a monolithic structure of reinforced concrete, supported by steel pillars and lime mortar lined with the will to be a Mediterranean sculpture that emerges from a natural field that maintains its historical roots.







When analyzing the program and the size of the housing required, the volume is implemented through two floors in each preexisting terrace, concentrating the larger volumetric on the two lower terraces, so that the terrace most visually exposed has the smaller volume.

Each room of the house focuses on the different visuals that the landscape offers: the sea, the valley, the olive fields and the small neighbouring pond. As for the pre-existing stonewalls, once rehabilitated and covered with dry stone from the area, they go through the house coinciding with the most relevant spaces. The covers are landscaped with varying degrees of inclination, with the intention of visually collecting the landscape, pretending to be part of it and also pretending that from a bird sight the presence of the house is not perceived, but rather a completely naturalized terrain.



The equipment of the house is resolved by incorporating integrated furniture that enhances the spaces in which it is part. Regarding the final materiality, it is proposed that this generates a cozy, friendly and connected home with the outside. Made with openings and pavement with stony texture that goes through the house from outside to inside and from inside to outside, and the use of neutral colours and warm wood for the rest of the materials.

